

Perfect Measurements



A photograph of a modern, two-story building with a light-colored facade and numerous windows, illuminated from within at night. The building has a prominent glass entrance and a large window with a triangular skylight. The interior lights are on, showing office spaces and a laboratory-like area. The sky is dark blue, and the foreground is dark with some bare trees.

Instrumentation for Water Industry

NIVUS SUBSIDIARIES AND SALES REPRESENTATIVES



THE NIVUS GROUP



■ **More Than 45 Years Of Quality, Experience, Service, Competence**

The **NIVUS Group** is a leading **developer, manufacturer and supplier** of ultrasonic measurement instruments for water economy. For more than 40 years our company has been pointing the way ahead by setting new standards and by continuously developing high-quality products and solutions in the area of measurement technology.

THE NIVUS GROUP



INSIGHTS

Certified according to
DIN EN ISO 9001 : 2000



- 1967** Udo Steppe founds the company
- 1975** Introduction of ultrasound for level measurement
- 1987** First self-developed CW – Doppler for flow measuring
- 1989** Establishment of nationwide sales network in Germany completed
- 1990** Development of CSO Controller remote control station
- 1991** Foundation of NIVUS Switzerland
- 1992** Introduction of self-developed portable flow meters (PCM)
- 1993** First complete family of portable and non-portable flow meters; introduced with IFAT 1993
- 1996** Foundation of NIVUS Austria
- 1998** Foundation of NIVUS Poland
- 1999** Foundation of NIVUS France
- 2002** Introduction of OCM Pro
- 2004** Introduction of PCM Pro
- 2004** Foundation of NIVUS UK
- 2009** Introduction of adapted grid measurement with OCM Pro for much more accurate flow rate detection
- 2010** Foundation of NIVUS Middle East (UAE)
- 2011** Foundation of NIVUS Korea

THE NIVUS GROUP



INSIGHTS

- Owner-managed company
- More than 100 employees
- Subsidiaries in F, GB, PL, CH, A, UAE, KR
- Representatives all over the world
- Development, manufacturing, sales and service - all from one source



Ebrahim Moussa
Business Development & Operation Manager

NIVUS Middle East (FZE)


- In June 2010 NIVUS have opened another chapter by establishing a new company in UAE in order to give clients in the Middle East and North Africa better services.

NIVUS Middle East (FZE) • Executive Suite Q1-1 - 055 • P.O. Box 9217 • Sharjah - UAE



NIVUS

Korea

A photograph of a man with dark hair, wearing a white dress shirt and a red and white plaid tie, standing in front of white horizontal blinds. A semi-transparent white box with black text is overlaid on the left side of the image.

Jong-ho Kwon
General Manager

- **In January 2011** NIVUS have opened another chapter by establishing a new company in Incheon in order to give clients in Korea better services.

NIVUS Korea Co. Ltd. • 2nd Floor Taewha Plaza • # 570-1 Majeon-dong, Seo-gu
Incheon 404-820 • Phone: +82 70 8620 7436 • E-Mail: korea@nivus.com

FIELDS OF ACTIVITY

■ The Perfect Solution For Each Application



Sewer Channel Networks

Portable and non-portable measurement systems with wireless GPRS data transmission for continuous detection of flow rates, levels and water quality in sewer channel networks.



Wastewater Treatment Plants

Portable and non-portable measurement systems for continuous detection and control of flow rates, levels and water quality in all sections of wastewater treatment plants.



Sewer Monitoring

We provide all solutions from one hand: from instrument rentals through measurement campaigns up to complete planning, implementation and data evaluation.



Flowing Waters

Flow measurements in rivers for flood protection, for calibration and validation of hydraulic calculation models, for billing and operation of facilities in the water economy.



Industry

Flow measurements and analysis in inlets and outlets conducting cooling water, circulation systems and turbine intakes of power plants and industry.



Water Supply

Measurement of level and pressure in deep wells and conveyor systems as well as flow measurements at elevated tanks and water treatment plants.

PRODUCTS AND SERVICES



PRODUCTS and Services

- **Our product portfolio** comprises metering devices for flow, level, pressure, density and turbidity. NIVUS furthermore provides devices and software for detection, transfer, recording and evaluation of data. A high-performance telecontrol system with multiple functions particularly for water economy completes the product range.

PRODUCTS AND SERVICES

■ Products And Services



FLOW MEASUREMENT



LEVEL MEASUREMENT



WATER QUALITY



TELECONTROL SYSTEM



URBAN DRAINAGE MONITORING

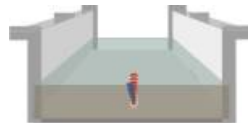
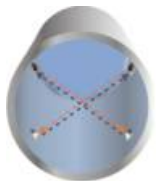


FLOW MEASUREMENT



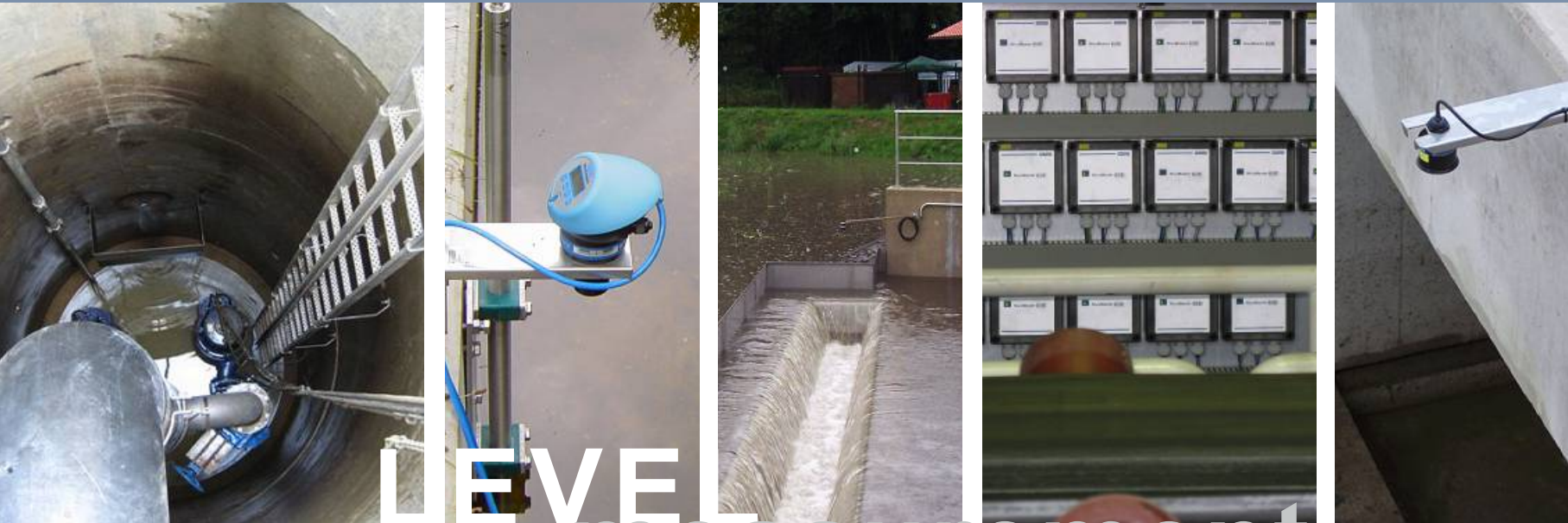
FLOW measurement

- Measurement systems for portable and non-portable flow measurement in full and part filled pipes, flumes, channels and surface water bodies.



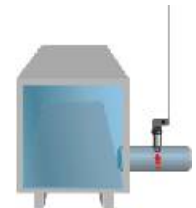
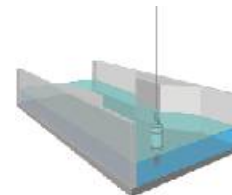
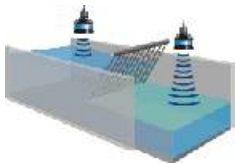


LEVEL MEASUREMENT



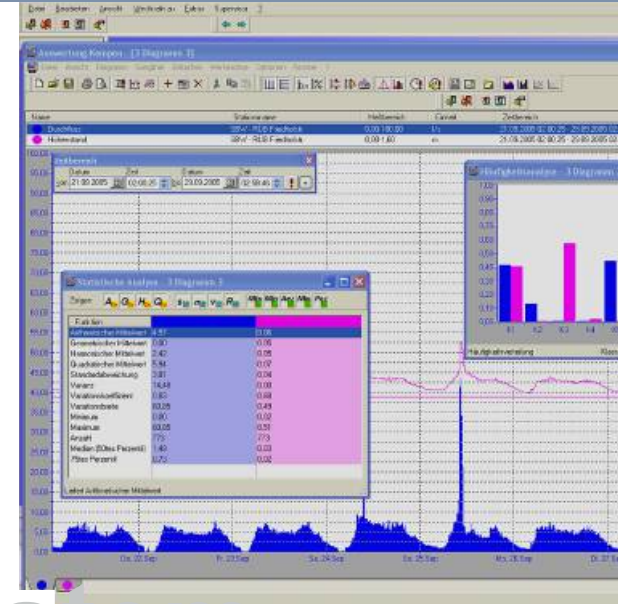
LEVEL measurement

- NIVUS provide ultrasonic and hydrostatic measurement systems for non-contact measurement of level, distance, empty space or volume.



10101
10101
10101

TELECONTROL SYSTEM

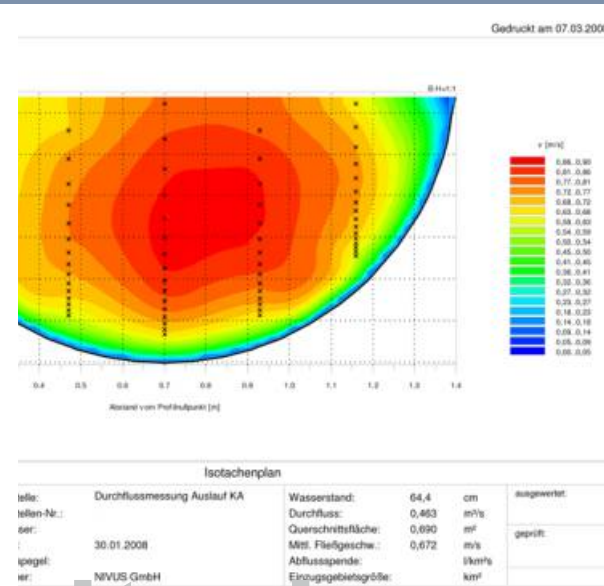


TELECONTROL System

- NIVUS furthermore provide devices and software for data acquisition, data transmission, data logging and data evaluation.
- The NICOS telecontrol system features many special functions particularly for the water economy. Control is possible from monitoring and control, evaluation and visualisation up to error message transmission.



URBAN DRAINAGE MONITORING



URBAN drainage monitoring

As part of measurement campaigns we gather for you

- Precipitation flow and combined wastewater flow
- Dry weather flow (wastewater and sewer infiltration water)
- Determining the load in wastewater systems and water bodies using online spectrometers (e.g. COD, turbidity, nitrate)
- Flowing waters



■ NIVUS - reliable performance all over the world

Almost all european capitals are convinced by the well-engineered NIVUS products and the many years of experience in everyday operation.

Warsaw



Sewer channel network management system with real time control

- The City of Warsaw uses NIVUS measurement systems to record raw flow data
- 55 measurement places:
20 portable and 35 non-portable units
- Systems used: 32 OCM Pro CF, 15 PCM Pro,
40 level measurement points

Vienna



Sewer channel network management system with real time control

One of the most important measures was the detection of wastewater volumes in the sewer channel system

- More than 40 wastewater volume measuring points and 20 additional level measurements have been set up in around 25 measurement places



■ NIVUS - reliable performance all over the world

Almost all european capitals are convinced by the well-engineered NIVUS products and the many years of experience in everyday operation.

London



London tideway tunnels to reduce the amount of untreated sewage overflowing into River Thames and River Lee

- Pre-qualification tests using portable and non-portable flow meters in Lee Tunnel between pumping station and sewage treatment works
- 7 m tunnel diameter

Paris



Modern wastewater treatment plant for Paris

- Three full filled outlet pipes to the Seine river, measured with OCM LR. Each pipe has a diameter of 3000 mm and a max. flow of 20 m³/s



■ NIVUS - reliable performance all over the world

Almost all european capitals are convinced by the well-engineered NIVUS products and the many years of experience in everyday operation.

Dueren



New construction of a pump station with 4 pumps on Dueren wastewater treatment plant

- Return sludge to be conveyed to denitrification stage, 4 pipe lines with 600 mm diameter, stainless steel
- Max. flow 1200 l/s per pipe, even distribution into tanks required
- Systems used: 4 NFP units and 4 V-sensors with ball valve

Bahrain



Wastewater Treatment Plant "Tubli", Manama

- Inflow: 4 rectangular channels width x height: 1.4 m x 1.5 m
- Calibration and certification online without the need for additional instrumentation
- Systems used: 4 OCM Pro CF units and 4 V-wedge sensors



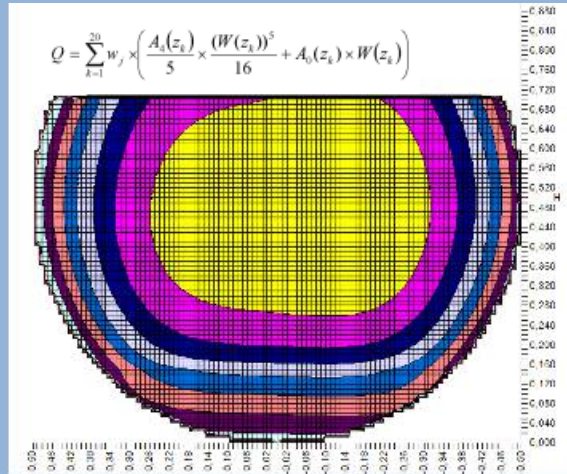
KNOW-HOW transfer

- **The transfer of know-how and service** is one of our top priorities. We continuously train distributors and customers in our premises on device technology and installation at an early stage. Our engineers have gained experience from countless applications all over the world. The NIVUS application experts are at your disposal, supporting you to find the perfect solution for your application!

Fachhochschule
Münster University of
Applied Sciences



University of
Muenster, Germany
and Strasbourg, France



RESEARCH development

- Research and Development Department**, the well-trained team of physicists, engineers and technicians are engaged in different areas: apart from the development of sensors, electronics and software we are especially interested in field operating conditions. Our precision in the area of research and development is well known: NIVUS products are used in state-supported development projects since long time. By cooperating with universities and institutes, new and suitable measurement technologies can be achieved.

A photograph of a water treatment facility at sunset. The sun is low on the horizon, casting a bright, golden glow across the sky and reflecting off the surface of a large water channel. In the background, there are several industrial structures, including tall towers and cylindrical tanks, silhouetted against the bright light. The overall scene is serene and industrial.

PERSPECTIVES

- **Due to constantly increasing requirements** to measurement technology, NIVUS are focused on providing both high-quality and economic products as well as solutions. To reach this goal we continuously invest in technology and the know-how of our employees.

A photograph of a water treatment plant at sunset, with the sun low on the horizon and its light reflecting on a body of water. The scene is overlaid with a white grid pattern. A white rectangular box is centered over the image, containing the text "Benefit from our experience and our know-how".

Benefit from our experience and our know-how