



Drum skimmers float on the surface, sealed flotation makes it unsinkable. The drums are motor driven (by air or hydraulics) and turn slowly attracting the oil to its surface and rotating around to the wiper blade which scrapes the floating oil off and it runs into the sump area, where it is picked up by pump suction and transferred to storage.

These drum skimmers are the most efficient and the most selective floating skimmers available anywhere, due to the large surface area that is exposed to the floating oil. Easy to install and operate. Drum skimmers need only 3" of water to float in. Great for heavy industrial or spill work and is the tool of choice for several spill contractors and facility owners since it is so fast and does not give you much water to deal with. Readily skims light hydrocarbon, kerosene, petrol, diesel or heavy floating oils.

Drum Type Oil Skimmer is composed of following components

Drum Skimmer Unit (Hydraulic Driven)

Power Pack (Diesel / Electric Operated)

Suction Pump (Hydraulic Driven / Air Driven)

Hydraulic Hose and Suction Hose

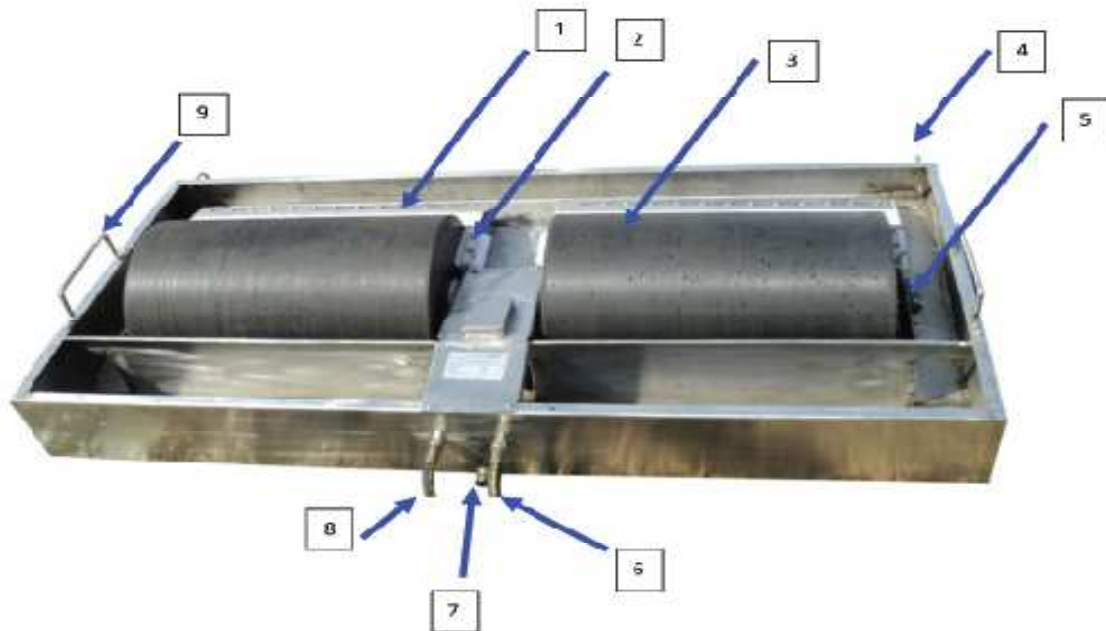
## SPECIFICATION OF FLOATING DRUM TYPE OIL SKIMMER

<b>Make</b>	VISCO
<b>Model</b>	DSKM-06
<b>Height</b>	500mm. Approx
<b>Width</b>	750mm. Approx
<b>Length</b>	1750mm. Approx.
<b>Type</b>	Floating Drum Oil Skimmer
<b>Capacity</b>	500 – 700 LPH
<b>M.O.C. of Module</b>	Anodized Marine Grade Aluminum
<b>No. of Drum</b>	2 Nos.
<b>M.O.C. of Drum</b>	Oleophilic
<b>Drum Dia</b>	420mm.
<b>Drum Drive</b>	Hydraulic Motor (High torque low Speed) Model = OMR – 100
<b>MOC of Scrapper</b>	P.T.F.E
<b>Pump Drive</b>	Hydraulic Drive
<b>Pump Control</b>	Through Level Switch
<b>Hydro Hose</b>	½" I. D. – (4 Nos.) each 15mtrs. Long with QRC connectors.
<b>Oil Discharge Hose</b>	2" I. D. – (1 Set.)
<b>Hydro Power Pack</b>	One FLP. Electric motor 10 H.P. 1400 R.P.M. with flow control, direction control, relief valves. Oil low level switch complete with suction & return line.
<b>Suction Pump</b>	Hydraulically driven submersible pumps, placed on shore with can handle solids upto 5 mm.
<b>Float</b>	Anodized Marine Grade Aluminum



# VISCO ENGINEERS

## 1.0 DRUM SKIMMER UNIT



### 1. SCRAPER

Scraper for skimming oil/lubricants or hydrocarbons from drum unit

### 2. SIDE SCRAPER

Scraper for skimming oil/lubricants or hydrocarbons from drum unit

### 3. DRUM

Drum used as an oleophilic medium to stick oil from the surface of water

### 4. U – CLAMP FOR CARRYING UNIT

### 5. BEARING – UCF 204

### 6. HYDRAULIC HOSE CONNECTING POINT (RED)

It is a point to connect ½ “hydraulic hose which comes from power pack. The power pack is also given red point. Both the red points i.e. hydraulic hose connecting point and power pack connecting point should be same (i.e. RED) and connected to same pipe.

### 7. CAMLOCK COUPLING CONNECTING POINT FOR SUCTION

Hydraulic Submersible pump/Air diaphragm suction pump's inlet point connects to port 7 by cam- lock coupling. The oil separated by skimmer is collected in a skimmer chamber and sucked by pump continuously.

### 8. HYDRAULIC HOSE CONNECTING POINT (BLUE)

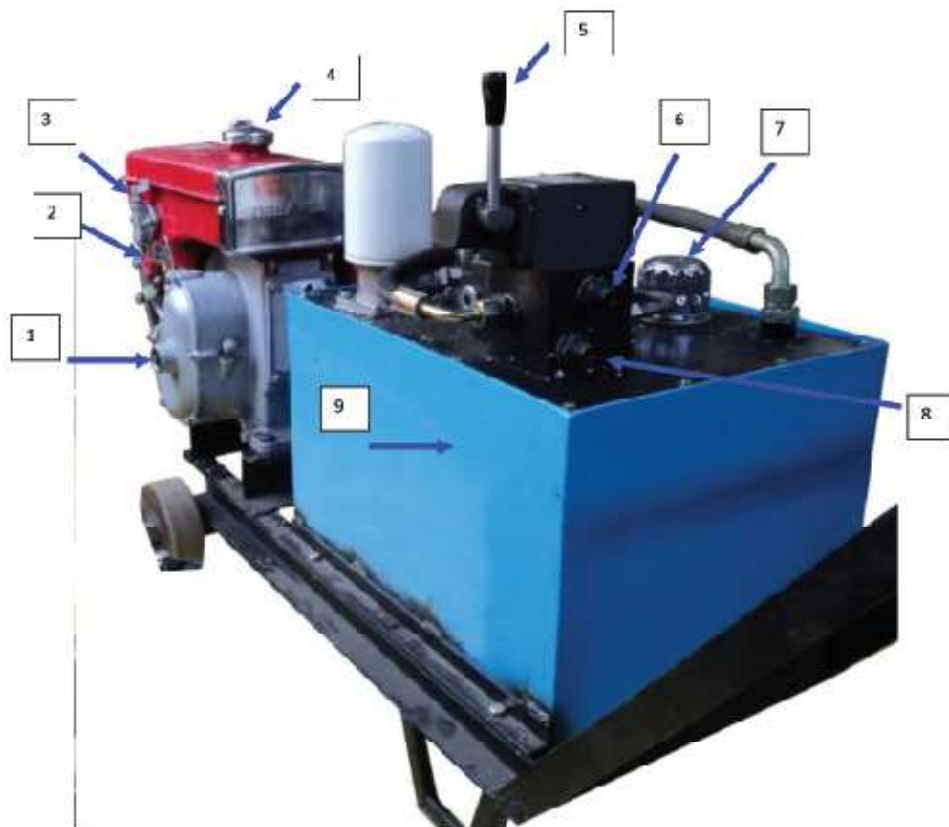
It is a point to connect ½ “hydraulic hose which comes from power pack. The power pack is also given blue point. Both the red points i.e. hydraulic hose connecting point and power pack connecting point should be same (i.e. BLUE) and connected to same pipe.

### 9. CLAMP for handling.



# VISCO ENGINEERS

## 2.0 POWER PACK WITH DIESEL DRIVE



### 1. ENGINE STARTING POINT BY HANDLE

To start engine couple handle at this point and move clockwise when handle comes in speed then push up lever and control engine speed by accelerator medium.

### 2. ACCELERATOR

### 3. OIL ON/OFF REGULATOR

### 4. DIESEL FILLING POINT

### 5. LEVER

### 6. HYDRAULIC HOSE CONNECTING POINT (RED)

### 7. HYDRAULIC OIL FILLING POINT

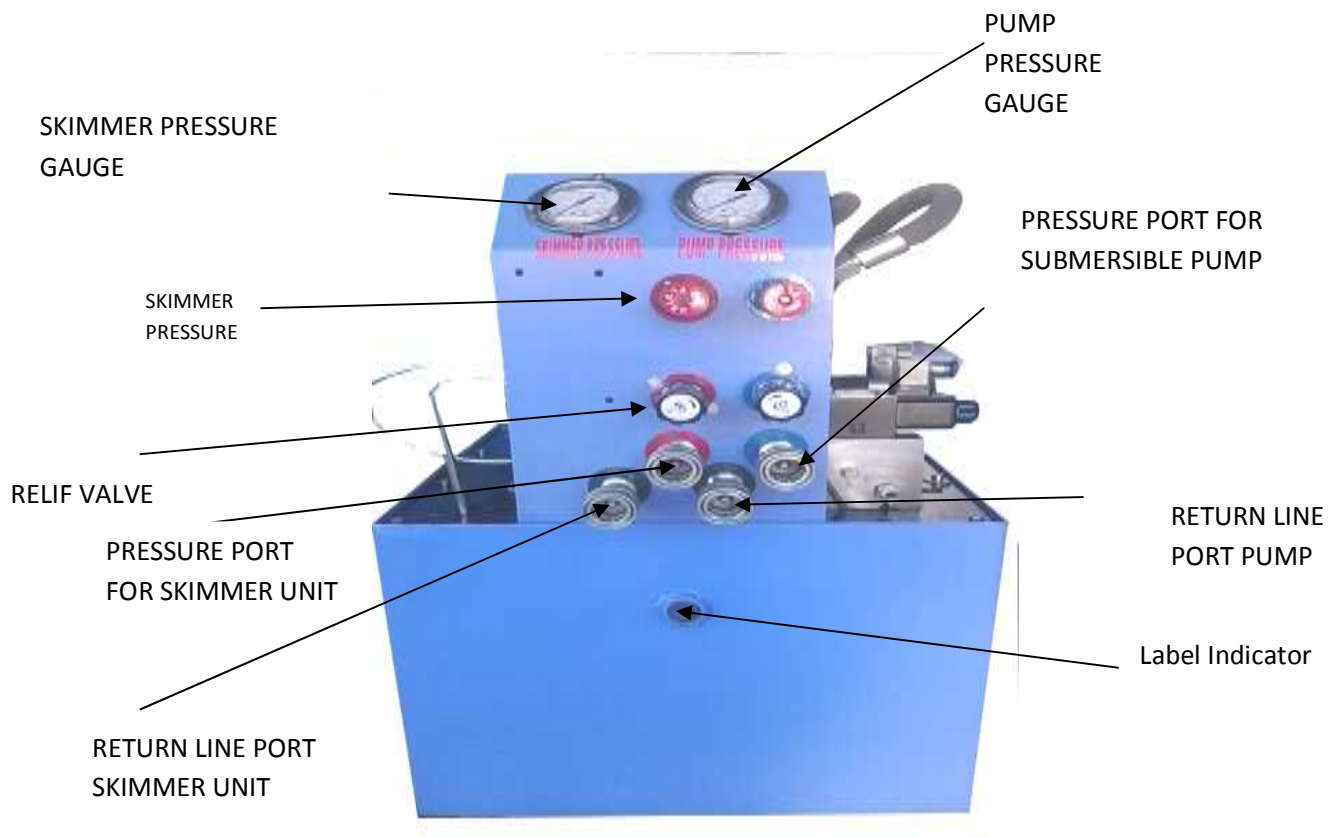
### 8. HYDRAULIC HOSE CONNECTING POINT (BLUE)

### 9. HYDRAULIC OIL TANK



# VISCO ENGINEERS

## 3.0 POWER PACK WITH ELECTRIC DRIVE

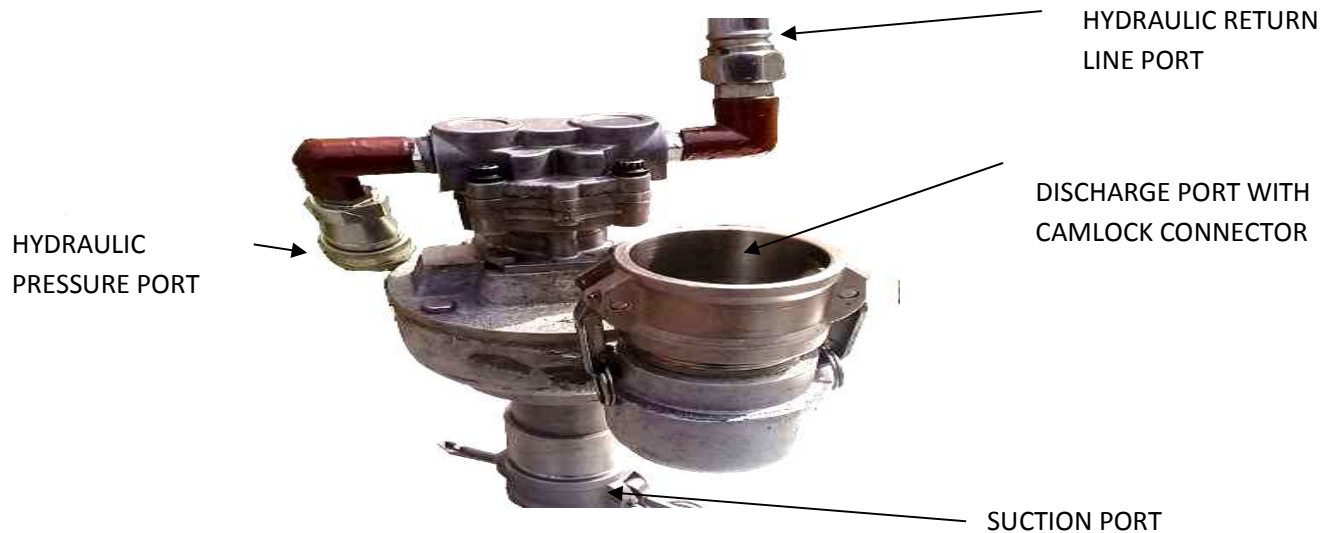


In the series of our products, we are also engaged in offering a wide range of light weight, movable Hydraulic Power Pack Machine to meet the demands of our customers. These machines are highly durable and are easy to operate. Our power packs are available in electric driven and diesel/petrol engine driven complete with flow control, direction control, direction relief valves. Oil low level switch complete with suction & return line filter. Approved hydraulic oil SERVO HYDRAULIC ALT 64 for power pack.



# VISCO ENGINEERS

## 4.0 HYDRAULIC SUBMERSIBLE SUCTION PUMP



1. SUCTION PORT 2" connects with skimmer unit through cam-lock coupling
2. 2 "oil transfer hose will connect to Suction pump through Cam lock coupling at Discharge Port.

### **VSC2" (HYDRAULIC SUBMERSIBLE HIGH PERFORMANCE)**

The model no. VSC2" is highly efficient water pump for use where small size, light weight, yet high performance pumping is required.

#### Specification -

Discharge Size: 2" NPT(F)

Maximum Flow: 45m<sup>3</sup>/hour

Maximum Head: 28 Meter

Hydraulic Input: 20-30 LPM)

Hydraulic Pressure: 90 - 140 Bar)

Weight: 8Kg (Aluminum)

Max Solid Size: ø25mm

HOSE PORTS: ½" QRC

PUMP BODY: Heat Treated Aluminum

IMPELLER: CS

SHAFT: Stainless Steel

SHAFT SEAL: Carbon / Ceramic (Std)

ELASTOMERS: Buna N (Std)

also...Dexron ATF or Bio-degradeable Oil

POWER SOURCE: Any Open Center Hydraulic System

#### Key Features

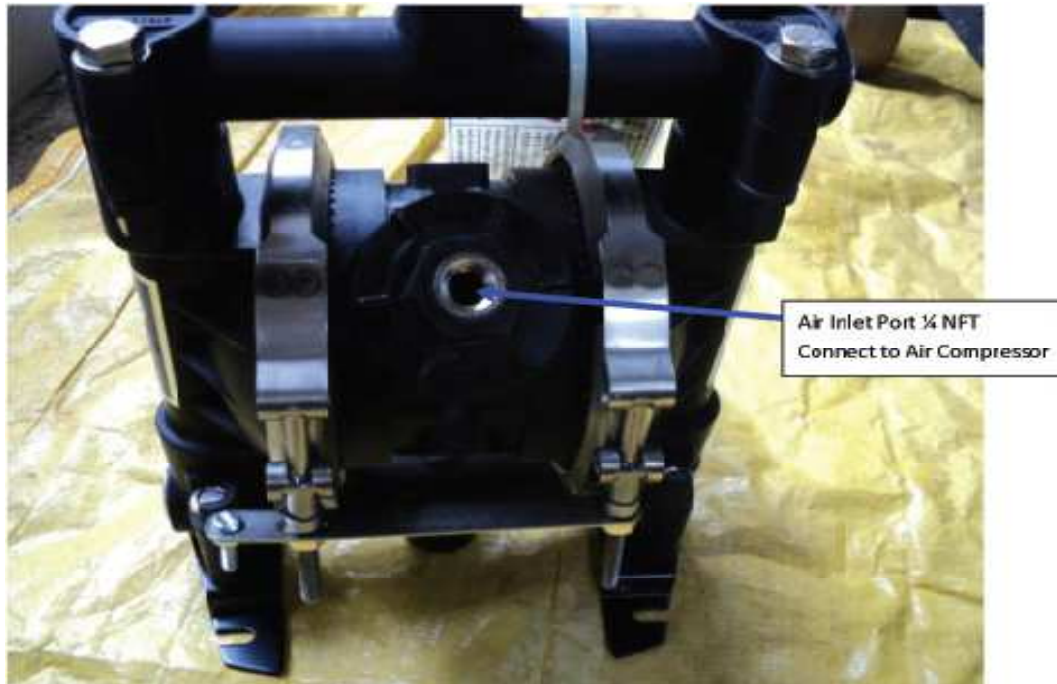
- Compact, Powerful pump for High-Head applications
- Will pass through a 12 in. diameter deck opening or deepwell casing
- Oil Lubricated Seals (can run dry)
- Variable Speed hydraulic drive
- Wide Range of performance
- Can be bolted directly into a pipeline
- Safe Hydraulic Drive can be used where electric power is hazardous or impractical





# VISCO ENGINEERS

## 4.0 AIR DRIVEN SUCTION PUMP



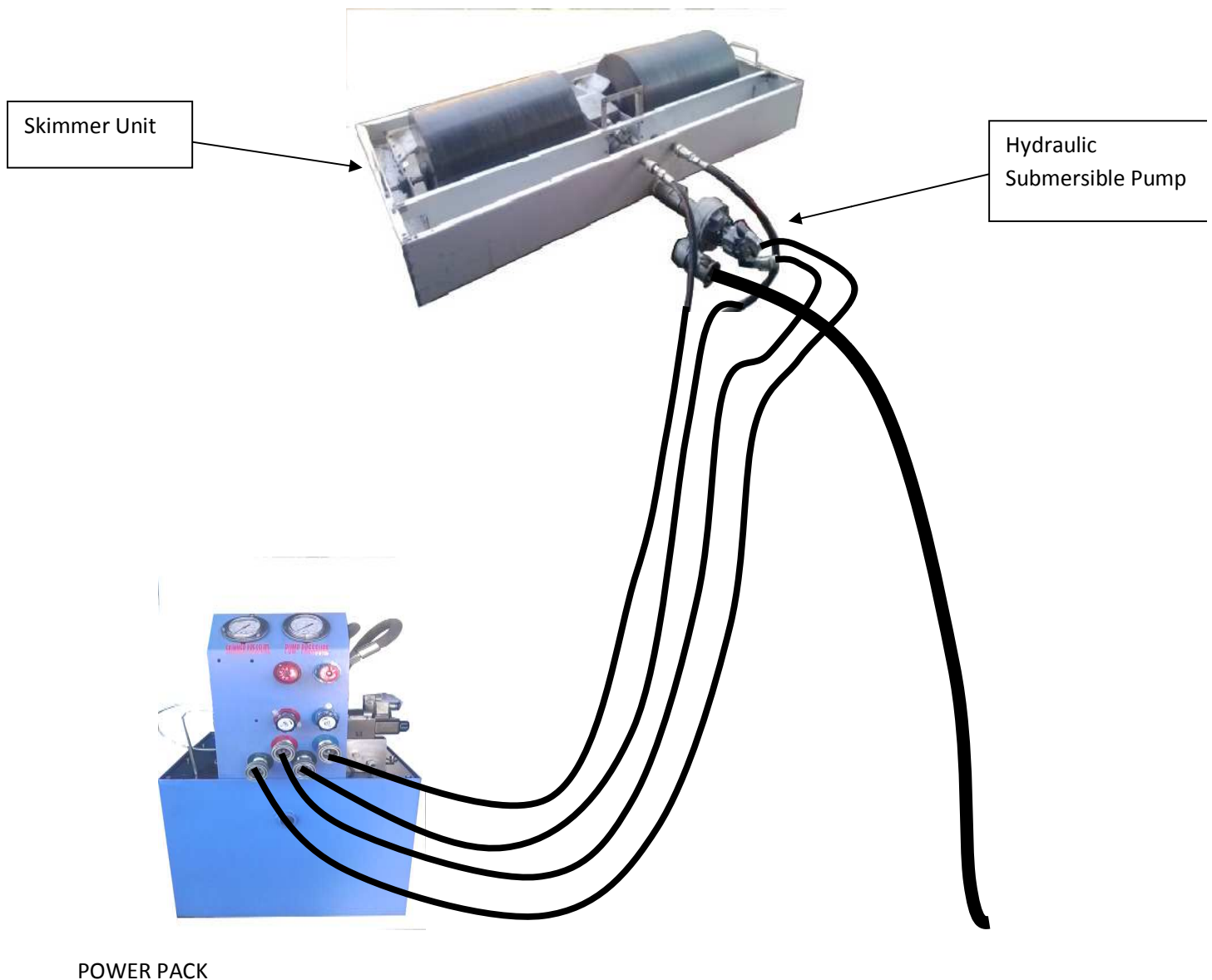
Diaphragm pump known as a Membrane pump, Air Operated Double Diaphragm Pump (AODD) or Pneumatic Diaphragm Pump. This is a positive displacement pump that uses a combination of the reciprocating action of a rubber, thermoplastic or teflon diaphragm and suitable valves. We supply all size of Diaphragm pump.

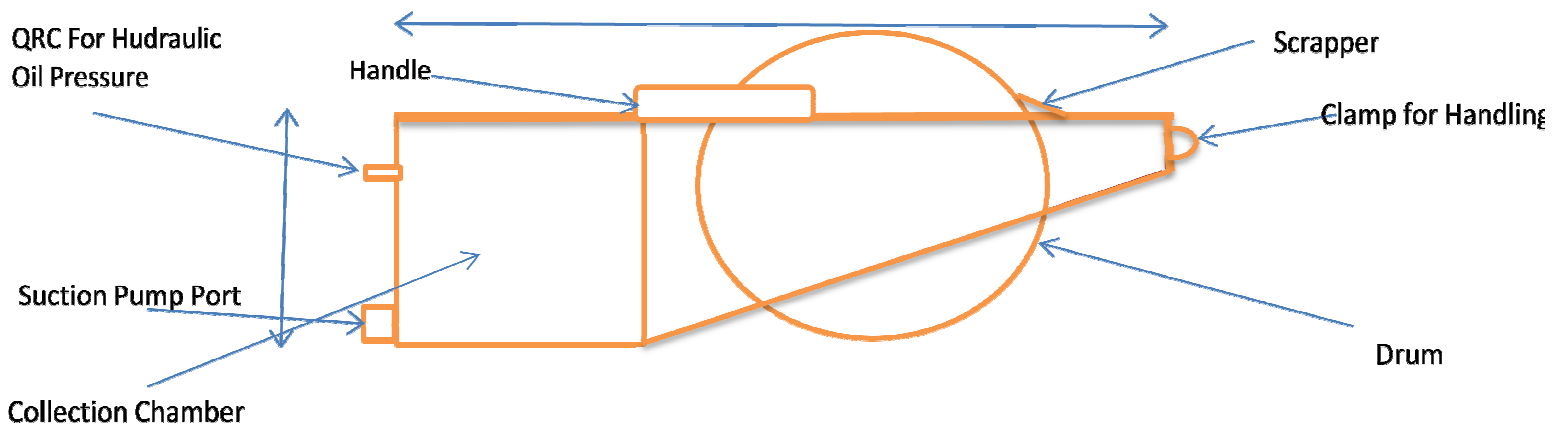
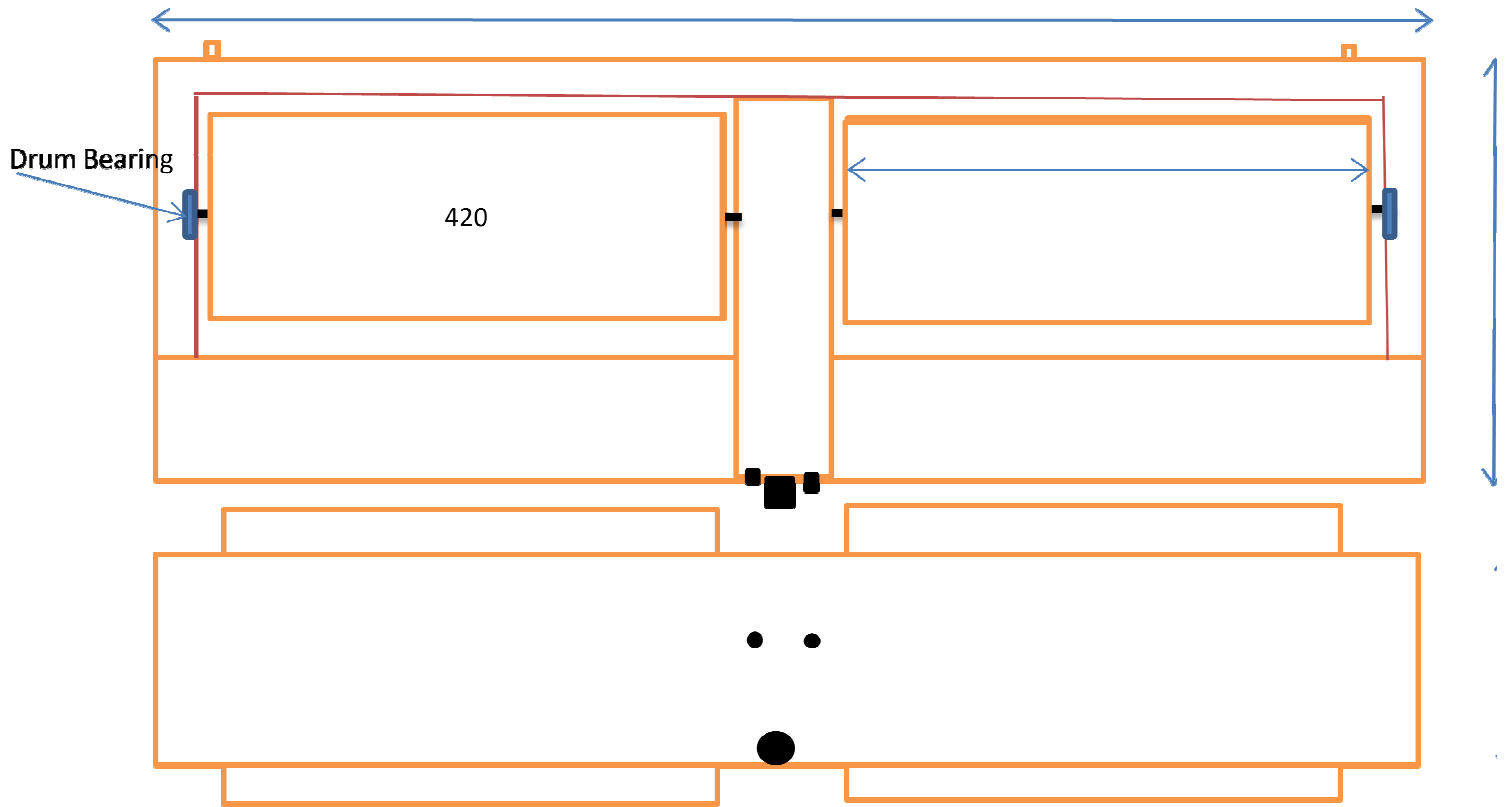


# VISCO ENGINEERS

## System Start-Up

Connect all parts with skimmer unit as per diagram. Start diesel engine and set medium speed. Then push power pack direction control valve's knob, both drums of the skimmer unit move in same direction. (Clockwise) You will see the floating oil sticking on drum and skimmed by scraper and collect in skimmer unit chamber where suction pump withdraws oil continuously.









# VISCO ENGINEERS





# VISCO ENGINEERS

