



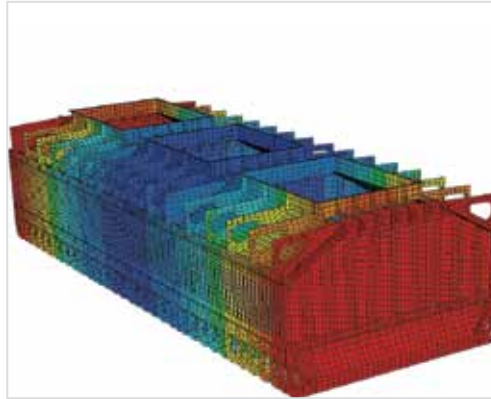
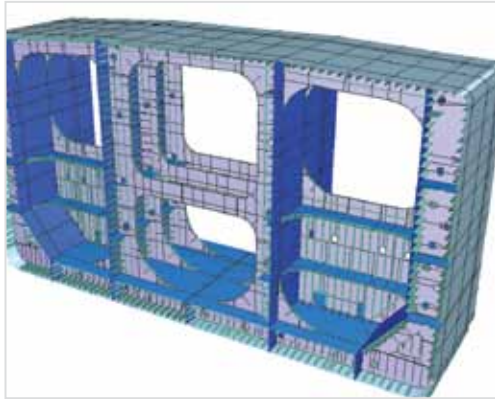
# Nauticus Hull

Rule strength analysis of hull structures

DNV Software

# Efficient design and analysis

Based on DNV's strong industry knowledge and expertise



Nauticus Hull is DNV's software solution for strength analysis of ships and FPSOs. It offers all the programs you need for hull design and verification according to DNV rules for ships and FPSOs and IACS Common Structural Rules. Based on DNV's strong industry knowledge and expertise, the system provides a highly efficient environment for design and verification.

## State-of-the-art technology

Nauticus Hull is a complete structural analysis package, developed by naval architects for naval architects. The system is an important part of the design and verification work for more than 200 users worldwide, many of whom use it alongside Sesam GeniE. High quality technical support and a development strategy based on the latest technology make Nauticus Hull a safe long-term solution.

## Rule calculations

User-friendliness and powerful modelling capabilities make the Rule Check package a generic design tool and a preferred system among ship designers for initial hull girder design and optimisation.

Rule Check includes:

### Section Scantlings

Section Scantlings is well established as the market leader for hull scantling design. Section Scantlings is used for designing ship cross-sections and transverse bulkheads. A rule check can be performed to verify the hull girder longitudinal strength, local strength and buckling of plates and stiffeners. Shear flow calculations are also included in the program. The model data

defined by Section Scantlings may later be expanded into 3D finite element models.

### Fatigue

Fatigue calculations of longitudinals are done directly from Section Scantlings. Structural data such as stiffener dimensions, end connection and bracket geometry are all input in the Section Scantlings program and used to calculate the fatigue strength. As a result of this, user interaction is reduced to a minimum and results are presented directly in the Section Scantlings report.

### Rule Check XL

Together with Section Scantlings, Rule Check XL provide all features needed to carry out rule check and hull structural analysis according to the DNV Rules for Ships and the IACS Common Structural Rules. The Rule Check XL programs, are all fully integrated into the Nauticus Hull system and share common ship data with the other Nauticus Hull modules.

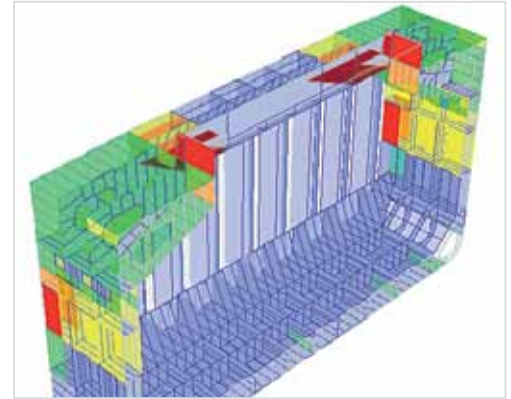
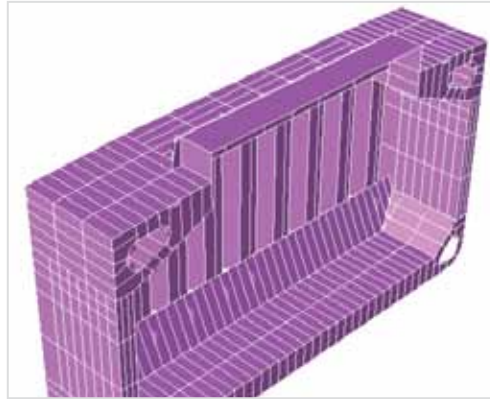
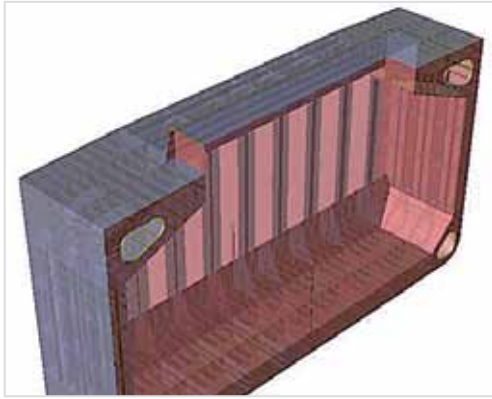
## Finite element analysis

Nauticus Hull and Sesam form a complete software package for direct strength analysis of ships and FPSOs. It builds on DNV Software's market-leading Sesam GeniE for 3D modelling and analysis, and provides full support for cargo hold analysis.

Sesam GeniE represents the latest generation design and analysis software for maritime and offshore structures. This has been motivated and driven by end-user needs for solutions offering faster modelling speeds, closely integrated with advanced strength assessment tools. By offering design, modelling, analysis and result evaluation features within the same user interface, Sesam GeniE supports the engineers' need for fast design iterations.

# Interface with Sesam GeniE

An integrated environment for modelling, post-processing and code check



By introducing concept modelling techniques, Sesam GeniE allows engineers to focus on real structural parts, loads and environmental conditions instead of nodes and elements. Combined with strong features for 3D visualisation, this significantly reduces the time spent on modelling and documentation and provides efficient verification.

Rule load cases, boundary conditions and corrosion additions are automatically created from Nauticus Hull and with integrated code checks the time spent on evaluation has been dramatically reduced.

## Beam analysis

Nauticus 3DBeam is a highly efficient three-dimensional general beam element analysis program offered in the Rule Check Extended package. 3D Beam is an important supplement to the Rule Check programs and a valuable tool for strength evaluation of both ship and frame structures.

3D Beam has an intuitive and user-friendly interface, tailor-made for modelling complex 3D frame structures such as web frames, foundations, deck grillages, etc. The program features a very powerful solver allowing fast and accurate linear static analysis of complex models with multiple load cases.

## Container securing

Nauticus Container Securing is a software tool for assessing forces on containers and securing devices during sea transport. A user-friendly environment lets the user easily model container arrangements and perform analyses. The program utilises a seamless combination of Microsoft Excel for input specification and result presentation and Nauticus 3D Beam for the analytical solution.

## Buckling assessment

PULS (Panel Ultimate Limit State) is a computerised buckling code recognised by DNV for strength assessment of stiffened thin plate elements in ship and offshore structures.

The methods used by PULS are based on advanced mathematical models, implemented into easy and intuitive user interfaces. The PULS strength limits are quickly assessed and supported by 3D graphics for improved understanding of the buckling phenomena.

The PULS code is implemented as part of the Nauticus Hull programs for automatic buckling control. PULS buckling check is available in Section Scantlings and in GeniE for buckling assessment of finite element models. In addition, two different stand-alone user interfaces are also available.

- PULS XL is fast and convenient to use for automatic buckling control of many real cases
- PULS Advanced Viewer provides easy access to 3D graphics of different results like buckling modes, redistributed stress patterns etc. This gives a deep understanding of the physical behaviour of non-linear buckling response

Oslo  
Det Norske Veritas AS  
DNV Software  
NO-1322 Høvik  
Norway  
Tel: +47 67 57 99 00  
Fax: +47 67 57 99 11

e-mail: [dnv.software@dnv.com](mailto:dnv.software@dnv.com)  
web: [www.dnv.com/software](http://www.dnv.com/software)

DNV Software regional offices:

Beijing  
7/F, East Tower Prosper Centre,  
Chaoyang District  
No. 5 Guang Hua Road  
Beijing 100020  
P.R. China  
Tel: +86 10 6562 7792  
Fax: +86 10 656276666

Busan  
7th Floor, Kolong Bldg, 36-7  
Namcheon 1 Dong, Suyong Gu,  
Busan  
613-815  
Republic of Korea  
Tel:+82-51-610-7792  
Fax:+82-51-611-7154

Dubai  
Bur Juman Office Tower,  
14th Floor, Trade Center Road,  
Dubai,  
United Arab Emirates  
Tel: +971 4 352 6626 Ext 308  
Fax: +971 4 352 3717

Houston  
1400 Ravello Drive,  
Katy  
Houston, Texas 77449  
USA  
Tel: +1 281 396 1700  
Fax: +1 281 396 1880

London  
Palace House  
3 Cathedral Street  
London SE1 9DE  
United Kingdom  
Tel: +44 (0)20 7716 6525  
Fax: +44 (0)20 7716 6738

Mumbai  
Emgeen Chambers  
10, C.S.T. Road  
Vidyanagari, Kalina  
Santacruz (East).  
Mumbai 400098  
India  
Tel: +91 22 26676667  
Fax: +91 22 266 56102

Rio de Janeiro  
Rua Sete de Setembro  
111/12 Floor  
20050006 Rio de Janeiro  
Brazil  
Tel: +55 21 3722 7232  
Fax: +55 21 3722 7572

Shanghai  
House No. 36  
1591 Hong Qiao Road  
Shanghai 200336  
P.R. China  
Tel: +86 21 3208 4518  
Fax: +86 21 6219 5107

Singapore  
DNV Technology Centre  
10 Science Park Drive  
Singapore 118224  
Singapore  
Tel: +65 6508 3284  
Fax: +65 6779 7949

DNV Software is a commercial software house fully owned by DNV, and is a leading provider of software for managing risk in oil & gas, offshore, petrochemical, refineries and maritime industries. Our software products are recognised market leaders in design, engineering, strength assessment, risk and reliability, safety and integrity management.